

Beginning-of-Year Procedures

Getting Started

How helpful was this page?



Unknown macro: 'rate'

Tell us what we can improve.

[Save as PDF](#)

Agenda



this page (and all its tabs) has been moved to <https://support.goalexandria.com/knowledge-base/beginning-of-year-procedures>

Beginning-of-Year Procedures

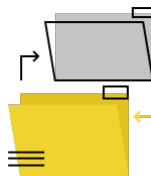
Here are some answers to common questions and tips for beginning your school year with Alexandria. Please note that several of the procedures described here, such as updating calendars, removing graduated students, and updating patron policies, overlap with our [End-of-Year Procedures](#). If you took these steps at the end of the previous school year, you don't need to do them again! Also note that procedures involving calendars and patrons overlap with Textbook Tracker, meaning you only have to do those procedures once to count for both Alexandria and Textbook Tracker.

1. Update Calendars
2. Import Patron Records
 - a. Import new patrons
 - b. Update locations, grades, and policies
 - c. Remove patrons
3. Update Expired Accounts
4. Backups



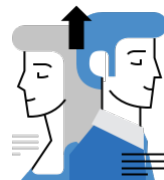
Calendars

Set your Closed and Period Due dates.



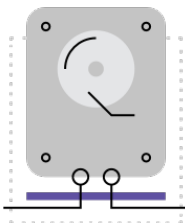
Import records

Add and remove patron information.



Update accounts

Renew patron accounts.



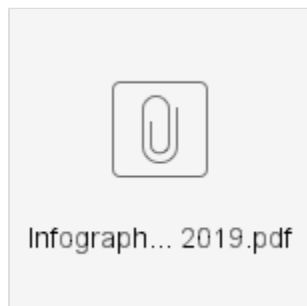
Backups

Be prepared. Back up your self-hosted data.

Beginning-of-Year Procedures

Additional resources:

- Check out the [Back-to-School Workshop video](#) if you would like to be walked through the procedures mentioned here.
- Need a quick refresher on how to operate Alexandria? Read the [Alexandria Refresher](#).
- If you're still using Alexandria v6, go through the [Beginning-of-Year Procedures for v6](#) instead.
- Print out this handy Beginning-of-Year Procedures infographic to keep at your desk. It's a great reminder of what needs to be done!



Before running any of the data-changing utilities described in the steps above, create an [archive](#) so you have a restore point if something unexpected happens.

Calendars

Calendars

[Calendars](#) are used in conjunction with Patron Policies to accurately perform circulation-based calculations, like due dates, fines, holds and reservations, etc. Alexandria will not adjust the due date after an item has been checked out, so it's important to establish your Closed and Period Due dates at the beginning of the year, before any items or resources are checked out. Read [Calendars](#) to learn more.

1. Go to [Preferences > Calendars](#).
2. Select a calendar from the list on the left.
3. Choose a date and click once for Closed, twice for Period Due.
 - a. To close the *same day of the week* for the *entire month*, click on one or more day of the week headings at the top of the calendar.
 - b. Click + to add a note to a particular date.
4. Click **Save** and move on to the next month, or the next calendar.
5. Repeat step 2-4 for each calendar.

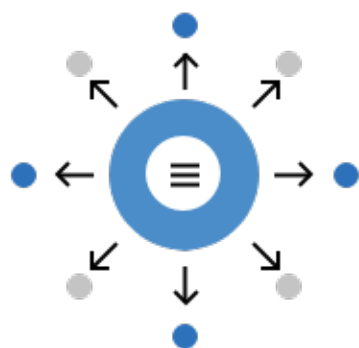
Patrons are assigned to a calendar according to their Patron Policy. Go to [Preferences > Policies](#) and check that each patron policy is assigned to the correct calendar and that [Apply Period Due Dates](#) is checked.



Period Due is a date by which all items should be returned to the library. The circulation period just before this date will be shortened so items are returned in time. For example, if you set a Period Due date of May 13, all items checked out before May 13th—that would have been due *after* the 13th—will be assigned a new due date of May 13th. Set a Period Due date to remind patrons to return their borrowed items before the end of the year or another specified period.

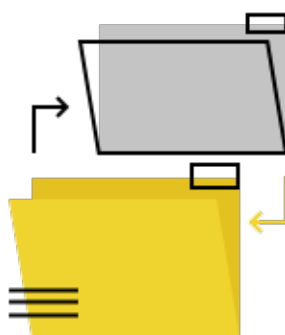
Import Records

Most libraries import and remove patron records once a year. Depending on how you manage your patrons, there are different steps to ensuring your patron database is properly kept clean and up-to-date.



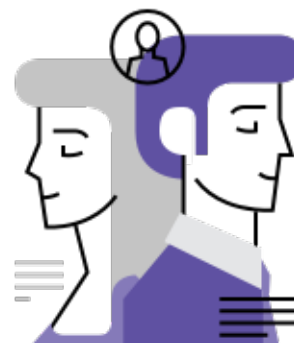
SIS

Using GG4L, Clever, or SIF



Manual Import or FTP

Running Quick or Saved Patron Imports



Manual Entry

Adding patrons through Patrons Management

Update Accounts

Update Expired Accounts

Skip if account dates are disabled.

Do you use expiration dates for patron accounts? Run the *Renew Patron Accounts* utility to update the expiration dates for the new year. It will reset and update the Account Exp date for all matching patrons to a date X number of days from when the utility is run, as specified in their [Patron Policy](#).

For example, if the patron's policy has Days Patron's Account is Active set to 365 and the utility is run on May 30, 2019, the patron's new expiration date would be May 29, 2020.

This utility will only work when **Preferences > Patrons > Patron Rules > Disable account expiration dates** is unchecked.

The number of days a patron's account is active after renewal is determined by [patron policies](#).

Selections

Selections

Renew accounts for the time specified in patron policies. Renew accounts for:

Patrons at Site: WHS - Washington High School

Patrons with a Status of: Active

Patrons in Security Group: Patron (5)

Patrons with a Policy of: Any Policy

Patrons from: Location From Through

Patrons in Grade: From Through

Patrons with Accounts Expiring on: From MM/DD/YYYY 13 Through MM/DD/YYYY 13 ▼

Patrons added: From MM/DD/YYYY 13 Through MM/DD/YYYY 13 ▼

Patrons with Last Name:

Patrons in Barcode Range: From Through

Patrons with Barcodes:

✓ Show Additional Selections
Create Saved Utility
Run

1. Go to **Operations > Utilities**.
2. Select the **Patrons > General** category on the left.
3. Choose the [Renew Patron Accounts utility](#) on the right.
4. On the **Selections** tab, enter the criteria for the patrons whose accounts you want to renew. To renew ALL expired patron accounts, leave the default settings.
5. Run the utility.

Backups

Backups



Self Hosted, only. Skip if your library is Cloud Hosted.

Finally, [create a complete backup](#) of your Alexandria Data folder. Unlike an [archive](#), backups are considered a "last resort" in case everything else fails.

Don't store your backups on the same device as your library data station. We recommend storing your backups with a file hosting or cloud storage service, like [Dropbox](#) or [CrashPlan](#), which are specifically designed to backup to other machines or off-site servers. If you use an external hard drive, we suggest storing it in a fire-resistant safe in an off-site location. It may seem extreme, but you never know what will happen, and we want you to be prepared for the worst.

This is also a great time to review and possibly revise your backup strategy. Read [Back Up Your Data](#) to learn more.