

Switch from v6 to v7

Getting Started

How helpful was this page?



Unknown macro: 'rate'

[Tell us what we can improve.](#)

[Save as PDF](#)

Considering a Switch?



Unknown macro: 'redirect'

Considering a Switch?

Are you thinking of switching from Alexandria v6 to v7? There are many exciting changes in store for you and your patrons. Check out our [Upgrade Conversion Guide](#) when you're ready.

Here's what you can expect before switching:



Unknown macro: 'multiexcerpt-include-macro'

Alexandria v7 Highlights

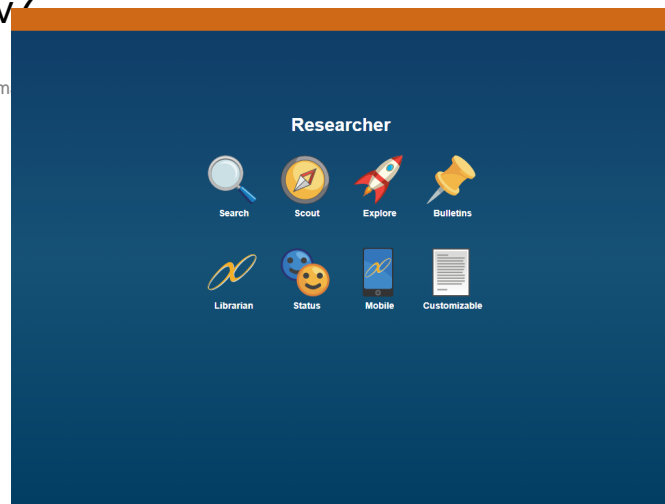
- Updated module interfaces
- Web-based application
- New [Search](#) interface
- Multiple search functions
- Faster search results
- Public and private saved [lists](#)
- New, versatile [Explore Builder](#)
- Cover art [Slideshow](#)
- Custom [label reports](#)
- Simplified report selections
- Redesigned utility options
- Improved [Researcher preferences](#)
- Emails for monetary receipts
- *and so much more!*

Researcher

Some of the most exciting changes are to our patron searching tools. Researcher is now a collection of refined patron interfaces including Search, Explore, and Scout.

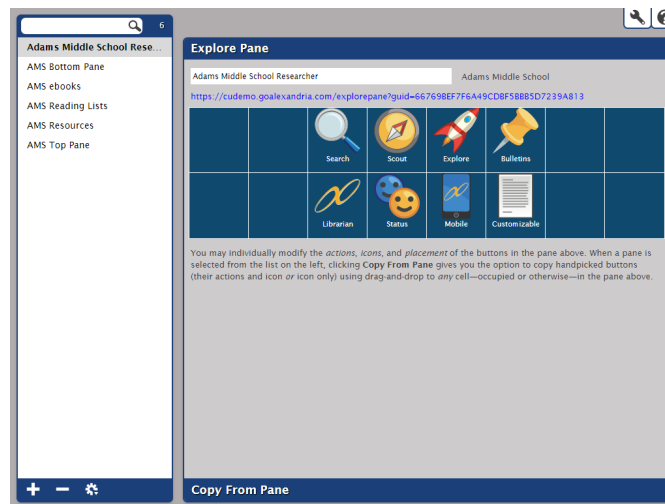
Switch from v6 to v7

Last Updated: \$action.dateFormatter.form



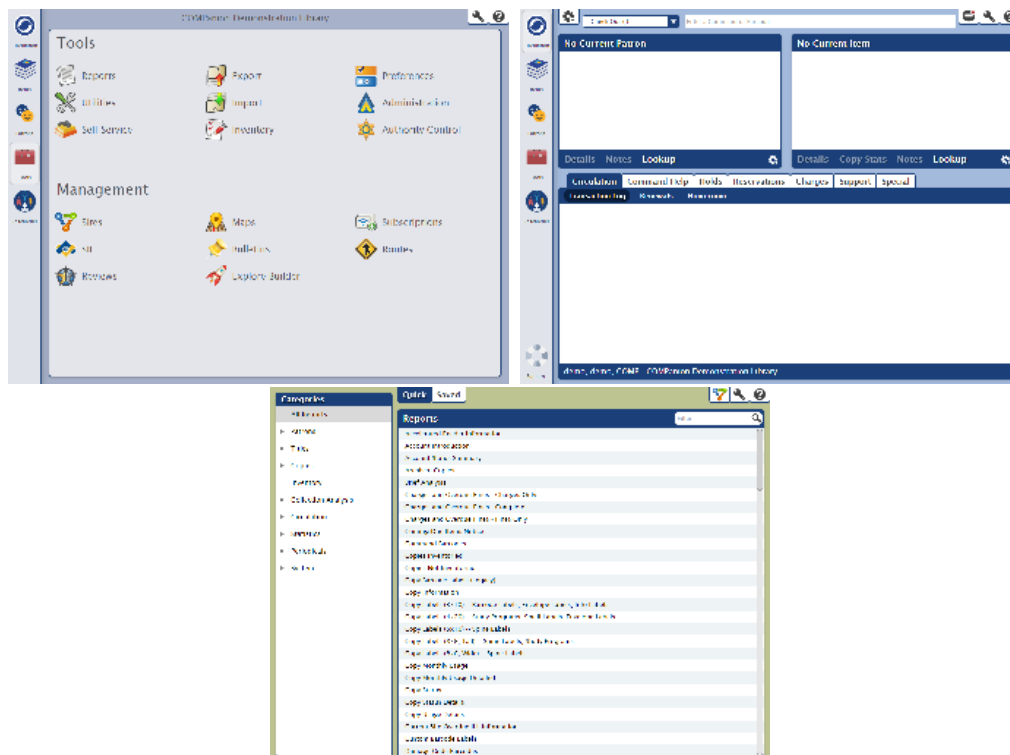
Explore Builder

The new Explore Builder not only lets you fully customize Explore, but also allows you to add visual interfaces to Search. Explore Builder includes hundreds of all-new modern icons at your disposal, so you can create buttons that navigate to predefined searches, specific items in your catalog, saved lists, external websites, panes in Search and Explore, bulletin boards, and more.



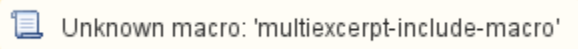
Updated Web-Based Interfaces

The newest version of Alexandria is entirely web-based, which means you can run Alexandria on all major web browsers, on all of your devices—no installation required, even for receipt printers or scanners.



v7 Features & Tools Workshop

Alexandria v7 Features & Tools Workshop



Frequently Asked Questions

Yes, the version 7 web interface is the total package. It allows you to create new reports and do everything else you need. There is no need to install a second interface.

There are a few things that do not transfer from version 6 to version 7. These are saved reports, the Alex Explore buttons, and the Authority Control database. The reason for this is because those features have changed. We have greatly enhanced these features and made them more powerful. The main difference in Alexandria version 7 for these setups is the need to install. If you are self-hosted, the hosting station is the single and only install needed, even if on a Controller or Centralized Union. If you are an Alexandria Cloud Hosted customer, there is NO program install needed ever. This means Alexandria can be available anywhere you have internet and a web browser.

There definitely is! We have a Demo available to anyone, 24/7. Please feel free to go there and try all the things that you do now in version 6. We sincerely want you to be comfortable and prepared for the change. You can access it at this web address: demo.goalexandria.com

As this information may vary between subscription types, you will want to contact our Customer Sales Team. They can be reached by phone or email here: 800.347.6439 - sales@companioncorp.com

Prepare for the Move

- Test out the new [Researcher](#) by visiting [demo.goalexandria.com](#).
- Check out the Librarian modules at [demo.goalexandria.com/librarian](#).
- Visit the [Alexandria Support Center](#).
- Check the [System Requirements](#).

Centralized Catalogs

- See how Alexandria works in a Central Catalog at cudemo.goalexandria.com.
- Review your license to ensure that you are registered for the correct number of sites.
- Review your patron and copy records to ensure that they are properly assigned to the correct site.

- The Union Site is not intended for circulation, and [special behavior](#) will apply. Any records assigned to the Union Site after conversion will be checked out to "In Processing" once daily maintenance is run.

Saved Reports, Utilities, Exports, and Imports

Because of the redesigns and improvements to these modules, saved Reports, Utilities, Exports, and Imports will not convert from v6 to v7; you will need to save your reports again manually.

In v6.22.7 (or later) Reports, run the [Operation Summary report](#). This gives you an all-inclusive list of every saved operation, so you can review the list for operations still in use, then recreate those saved operations in v7. Check out the [Reports Conversion](#) guide for more info.

Explore Builder Buttons and Panes

With all the improvements to Explore Builder, we will not be able to convert existing panes, so you have the chance to start fresh! Review your Explore panes to ensure your icons are updated and your custom searches are relevant, then use the new interface to tailor-fit your patron searching experience.

In v6.22.9 (or later) Reports, run the Explore Pane Summary report. This will help you recreate your buttons in Explore Builder.

Orders and Budgets

Another way we've made Alexandria more user-friendly and relevant is by removing modules that are not used: Due to lack of customer interest, Orders and Budgets are no longer supported, and there are no immediate plans for their return.

Upgrade Your Printer

Along with upgrading your software, now is the time to upgrade your printer. We are now offering a network receipt printer that can be shared by multiple stations and works with the new web interfaces. Contact our Sales Team (1-800-347-6439) to learn more.



View the [v6 to v7 Conversion Guide](#) to learn more, then contact Alexandria's Sales Team at 1-800-347-6439 to request the switch to v7.